



ESF Jämt

Swedish model for
Gender Mainstreaming in ESF projects



ESF Jämt

ESF Jämt is the Swedish name of the County Administrative Board's joint investment. It aims at equality, gender equality and Gender Mainstreaming.

- ESF Jämt is a collaborative project involving all county administrative boards in Sweden.
- The support organization consists of one national coordinator and eight project supports in eight regions.
- Gender equality experts in steering group.
- ESF Jämt expands between the years 2009 until 2012



Target group

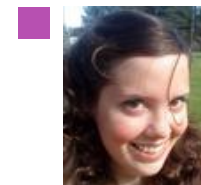
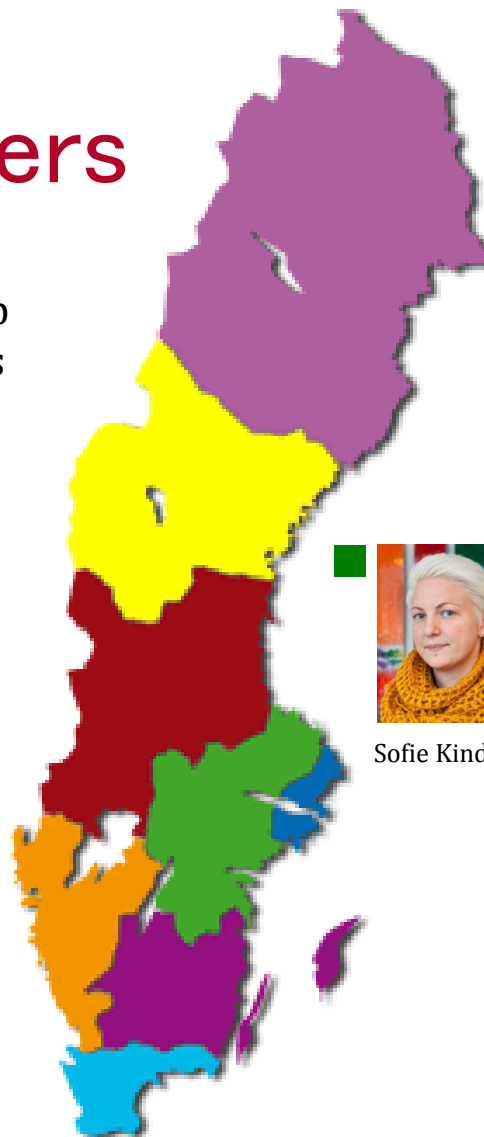
- ESF Jämt's target group is the ESF-projects key persons and not the participants in the projects. This since Gender Mainstreaming is the responsibility of the project-managemnet.
- Examples of project owners: Employment service, public utility, society, regional organization, county council, extension university, private companies, trade organization etc.



Project supporters

The nine project supporters offers help in Gender Mainstreaming to applicants and granted projects within the Social Fund. They offer free:

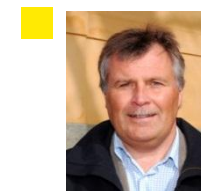
- Individual consulting (phone, email and meetings).
- Training in gender knowledge.
- National seminars and conferences.
- Workshops as well as advanced seminars.



Maria Stefansson



Monica Forsman



Dan Humble



Katarina Jakobsson



Sofie Kindahl



Åsa Trotzig



Anna-Elvira Cederholm

Melinda Höglind

Helena Berggren



Commonly discussed areas

- Activities within the projects
 - Activities that fulfill both women's and men's needs?
 - When are the activities taking place? And where?
- Differences in results between women and men
 - What are the reasons? Which changes are needed?
- How to gender mainstreaming training sessions
 - The educational situation
 - The subjects

Result

National May 2009- June 2012

Training sessions/Work shops: 712

Support sessions: 1903

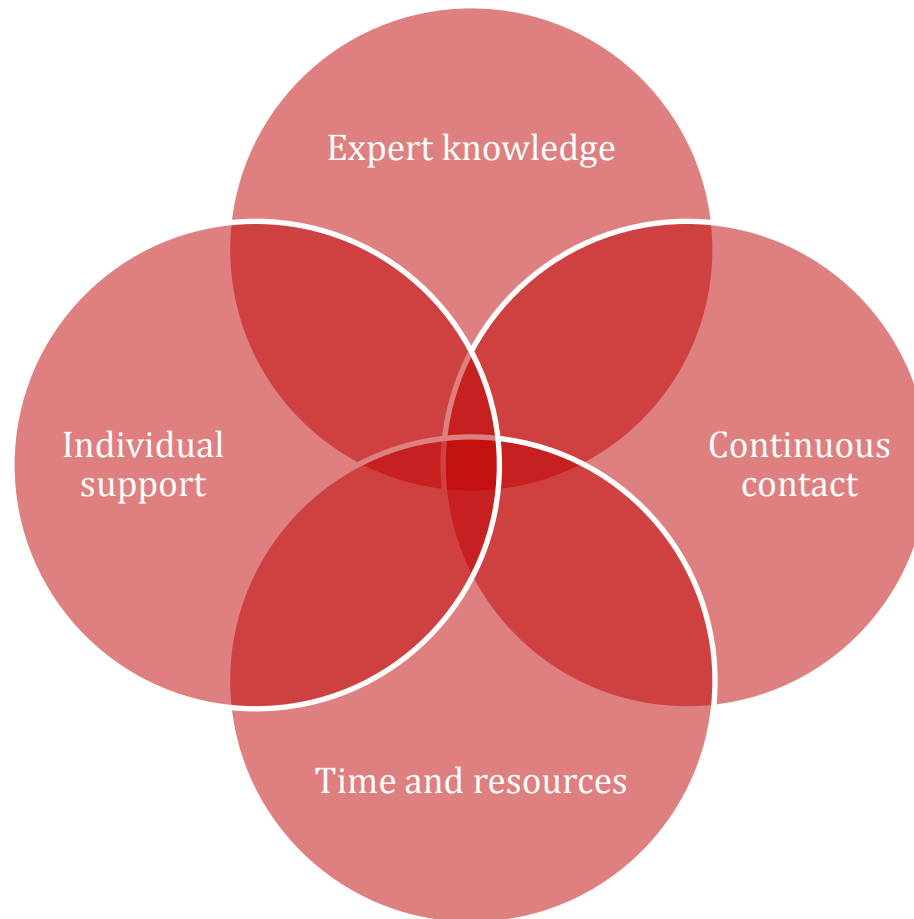
Upper North May 2009-September 2012

Training sessions/Work shops: 75

Support sessions: 288



Factors for success



Contact

National Coordinator

Laila Berglund

019-19 35 46 • 0703-10 35 46

laila.berglund@lansstyrelsen.se

Project supporters Upper North

Maria Stefansson

0920-960 42 • 0703-83 60 03

maria.stefansson@lansstyrelsen.se

Monica Forsman

0920-960 42 • 0706-82 60 61

monica.forsman@lansstyrelsen.se